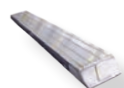


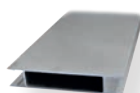
**STANDARD**



**Planchers**  
Floors



**Kits hydrauliques**  
Hydraulic kits



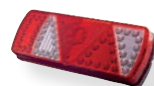
**Carrosserie**  
Bodywork



**Bâchage**  
Sheeting

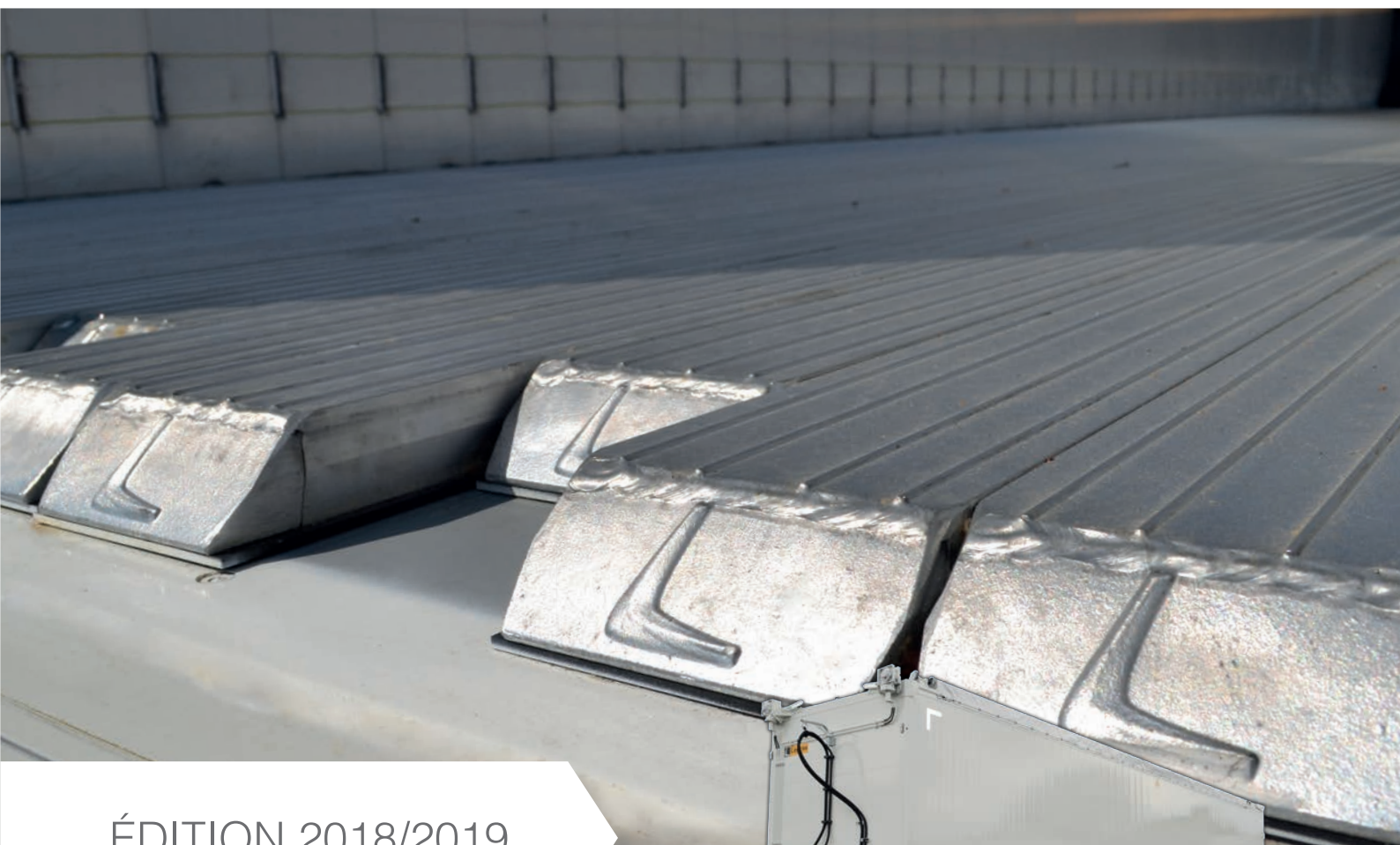


**Distributeurs**  
Spoolvalves



**Signalisation**  
Lights

**Catalogue pièces détachées**  
Spare parts book **FMA**<sup>®</sup>



ÉDITION 2018/2019

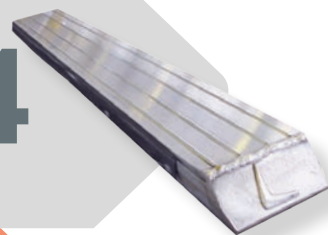




# SOMMAIRE / Table of contents

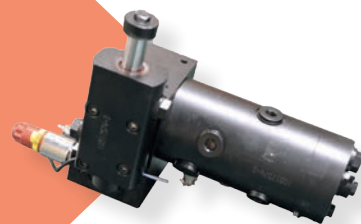
**Planchers / Floors**

04



**Kits hydrauliques / Hydraulic kits**

07



**Carrosserie / Bodywork**

11



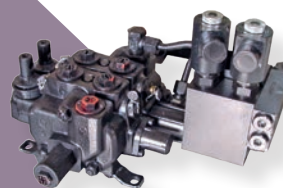
**Bâchage / Sheeting**

18



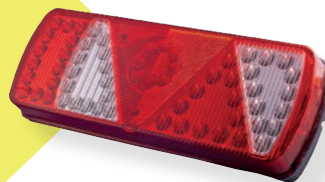
**Distributeurs hydrauliques / Hydraulic spoolvalves**

21

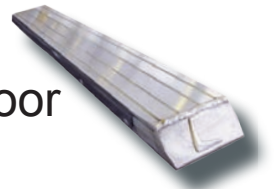


**Signalisation / Lights**

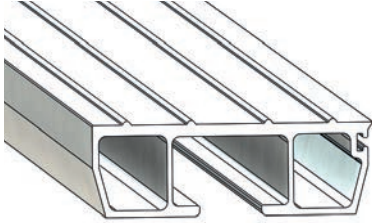
22



# Plancher FMA® standard/ Standard FMA® floor

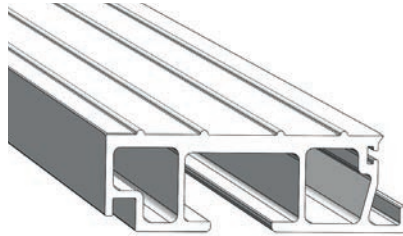


340F00122060



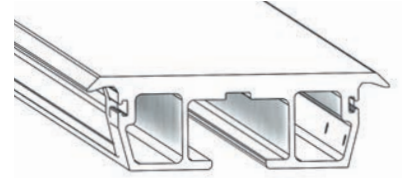
**Barrette FMA® 7 mm**  
Floor plank 7 mm

340F15023600



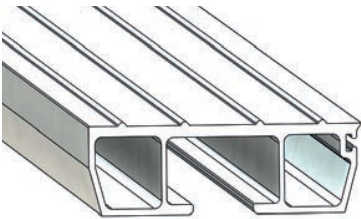
**Barrette FMA® 7 mm étanche**  
Floor plank draining 7 mm

340F00360664



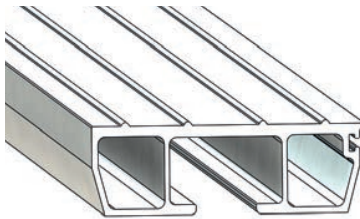
**Barrette type 11 mm centrale à recouvrement**  
Floor plank 11 mm double recovery

340F00122260



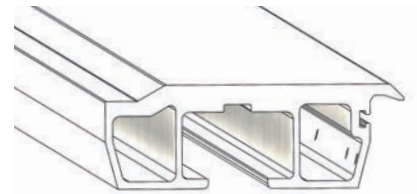
**Barrette FMA® 5 mm hauteur 38 mm**  
Floor plank 5 mm h 38 mm

340F00123760



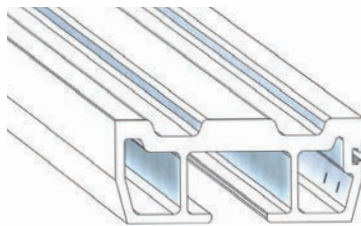
**Barrette FMA® 5 mm hauteur 35 mm**  
Floor plank 5 mm h 35 mm

340F00360662



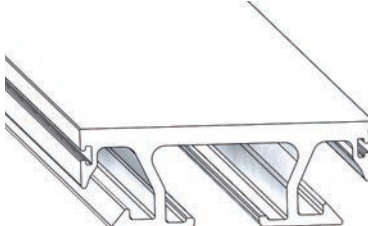
**Barrette type 11 mm latérale à recouvrement**  
Floor plank 11 mm simple recovery

340F00360616



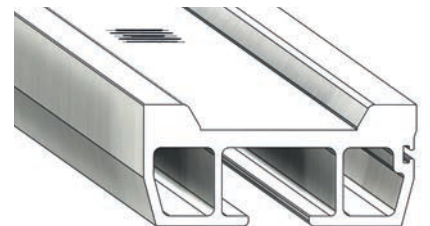
**Barrette renforcée 3 bossages**  
Reinforced floor plank

341F00360640



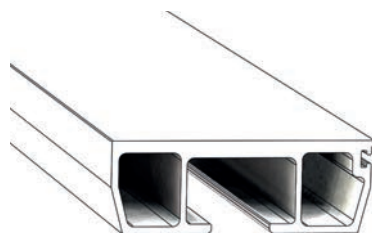
**Profil Barrette FMA® 7 mm goulotte**  
Floor plank 7 mm h 35 mm

340A27961



**Profil Barrette FMA® 7/17 mm**  
Floor plank 7/17 mm

340F23921260



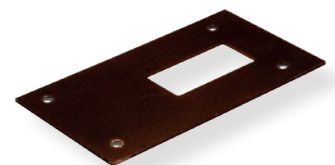
**Barrette FMA® 5 mm lisse**  
Floor plank smooth 5 mm

F00360516



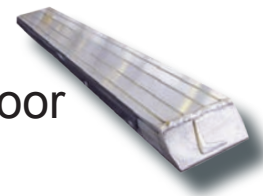
**Embout de barrette**  
Floor plank end cap

F00124196



**Plat acier sous barrette (HB 450)**  
Floor plank end shoe (HB 450)

# Plancher FMA® standard / Standard FMA® floor



128A6046



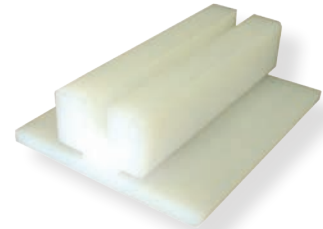
**Rivet pour plat acier**  
Steel wear strip pop rivet

F00120352



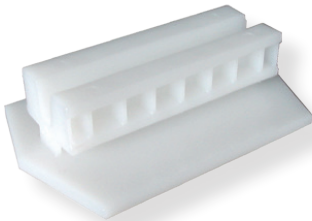
**Étrier de té**  
Wear pad «U» bolt

F00126558



**Té de guidage renforcé**  
Machined wear pad

322A28015



**Té de guidage injecté**  
Injection moulding wear pad

122011005



**Écrou d'étrier**  
«U» bolt nuts

KOF00174656



**Traverse percée avec goussets**  
Cross bearer drilled with gusset

145901235



**Joint FMA® au mètre (13,5 mètres par barrette)**  
Floor plank seal per meter (13,5 meter/floor plank)

126A28095



**Vis de joint FMA® (16 vis par barrette)**  
Screws for side seal (16 screws per floor plank)

F35131201



**Vis de barrette FMA® (5 vis par barrette)**  
Floor plank securing screw (5 screws per floor plank)

145A28090



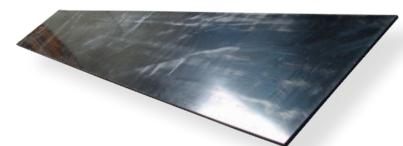
**Joint FMA® double lèvres (au mètre)**  
Double floor plank seal (in meter)

322A01854



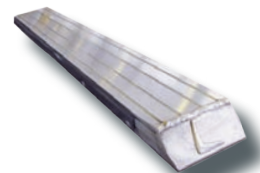
**Joint de rattrapage 3 mm (au mètre)**  
Floor plank side seal 3 mm (per meter)

F00124165



**Plat de glissement arrière 300 mm**  
Rear wear strip 300 mm

# Plancher FMA® acier / Steel FMA® floor



KOF22353312 : Lg 450 mm  
F24481291/KO : Lg 3000 mm



**Plat aluminium arrière sur barrette 5 et 7 mm**  
5 and 7 mm floor plank / end cap reinforcement

F25811201 : Lg 450 mm  
F25101274/KO : Lg 3000 mm



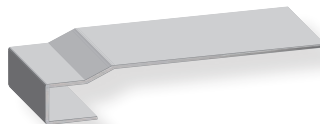
**Plat aluminium arrière sur barrette résichoc**  
Impact plus floor rear plank/end cap reinforcement

345A28094



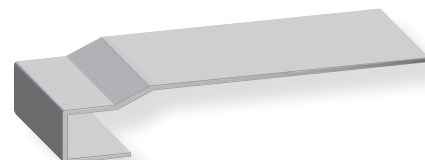
**Embout de raboutage**  
Tip splicing

F46621265



**Barrette acier porte manuelle**  
Steel floor plank manual door

F49681265



**Barrette acier porte auto**  
Steel floor plank hydraulic door

F38131283



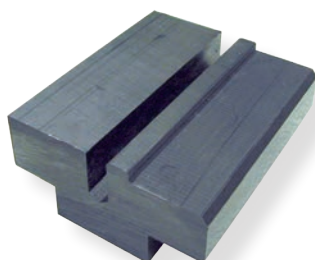
**Plat acier arrière (HB 450) pour tapis acier**  
Rear steel wear strip (HB 450)

F38131213



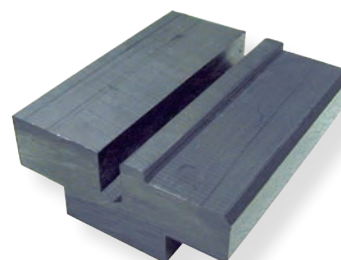
**Plat de calage pour aiguille**  
Fingerbar spacer

F46621272



**Té de guidage pour tapis acier 93x120**  
Steel floor wear pad 92x120

F38131272



**Té de guidage pour tapis acier 102x120**  
Steel floor wear pad 102x120

# Accessoires kit hydraulique FMA®

## Hydraulic kit FMA® components



186A28056



**Aiguille 45 x 20 x 525 mm**  
Fingerbar 45 x 20 x 525 mm

186A28217



**Aiguille kit CF 500**  
CF 500 fingerbar

186A28218



**Plat d'aiguille**  
Fingerbar plate

186A28028 (SL1-SL2)  
186A28279 (SLC)



**Vérin de kit n°1 (gauche)**  
Floor cylinder n° 1 (left)

186A28029 (SL1-SL2)  
186A28280 (SLC)



**Vérin de kit n°2 (central)**  
Floor cylinder n° 2 (central)

186A28030 (SL1-SL2)  
186A28281 (SLC)



**Vérin de kit n°3 (droit)**  
Floor cylinder n° 3 (right)

186A16554



**Ressort de clapet**  
Valve Spring

186A16555



**Clapet de Vérin**  
Cylinder valve

065A86



**Indicateur de colmatage**  
Clogging indicator

186A16489



**Ressort de compression inverseur**  
Reversing compression spring

065A29758



**Cartouche pour filtre**  
065A29749 LG 205 mm  
(→08/2010)  
Filter for 065A29749  
(→08/2010)

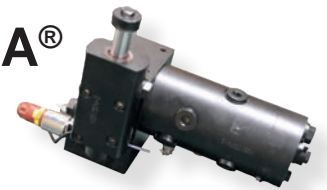
065A29749



**Filtre complet > 08/2010**  
Filter assembly > 08/2010

# Accessoires kit hydraulique FMA®

## Hydraulic kit FMA® components



065A19828



**Cartouche hydraulique 6''  
LG 155 mm**  
Hydraulic filter Elément 6''

065A19827



**Filtre complet 6''**  
Hydraulic filter assembly 6''

186A28284



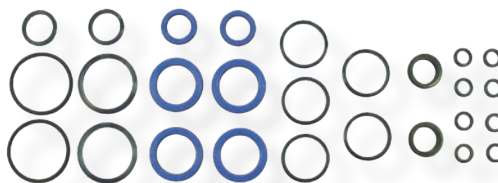
**Kit joints de vérin CF 300 /  
CF 500**  
Cylinder seals kit CF 300 / CF 500

186A28054



**Kit joints common rail**  
Common rail seals kit

186A28055



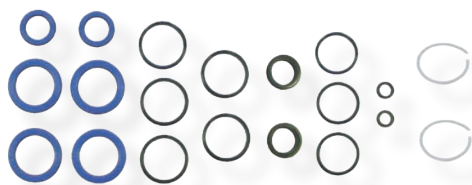
**Kit joints bloc de commande SL1**  
Switching valve seals kit SL1

186A28124



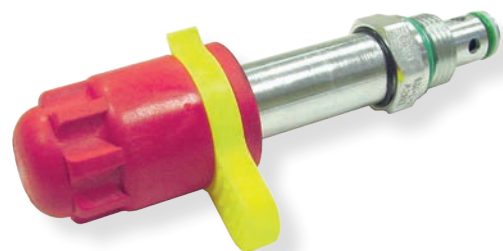
**Bobine d'électroaimant  
(04/2005→)**  
Solenoid coil (04/2005→)

186A28170



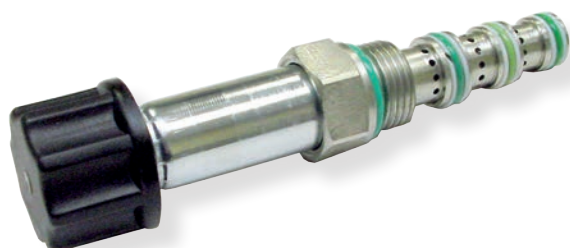
**Kit joints bloc de commande SL-2**  
SL-2 switching valve seals kit

186A28122



**Electroaimant mise sous pression (04/2005→)**  
Under pressure solenoid (04/2005→)

186A28123



**Electroaimant (dé)chargement (04/2005→)**  
Standard solenoid load/unload (04/2005→)

186A28027



**Bloc de commande CF 500 SL1 (10/2006)**  
Switching valve CF 500 SL1 (09/2006)

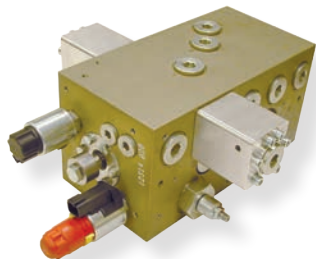


# Accessoires kit hydraulique FMA®

## Hydraulic kit FMA® components



186A28169



**Bloc de commande CF 500 SL-2 (→10/2006)**  
Switching valve CF 500 SL-2 (→10/2006)

186A28046



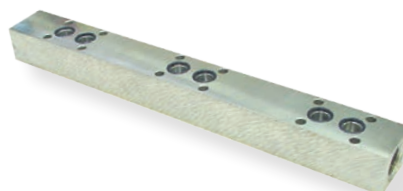
**Common rail CF 500 SL - 1 cul de vérin côté bloc**  
Cf 500 SL common rail

186A28047



**Common rail CF 500 SL - 1 tête de vérin côté tige**  
CF 500 SL common rail

186A28171



**Common rail CF 500 SL-2 avant et arrière**  
CF 500 SL-2 common rail

186A16478



**Guide plastique pour tige de Vérin CF 300**  
Cylinder plastic guide CF 300

F00505600



**Connecteur boîte legras / Radio cargo**  
Box Legras / Radio Cargo connector

F00505500



119A34658



**Télécommande fixe**  
Wonder lead assembly

119A34516



**Ensemble émetteur / récepteur**  
Remote control / receiver assembly



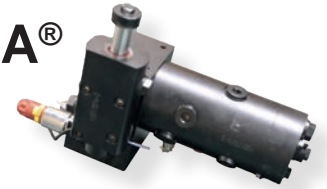
119A35036



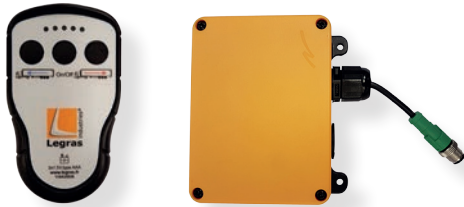
**Émetteur seul**  
CF 500 remote control only

# Accessoires kit hydraulique FMA®

## Hydraulic kit FMA® components



119A34814



**Ensemble émetteur / récepteur**  
Remote control / receiver assembly

119A28558



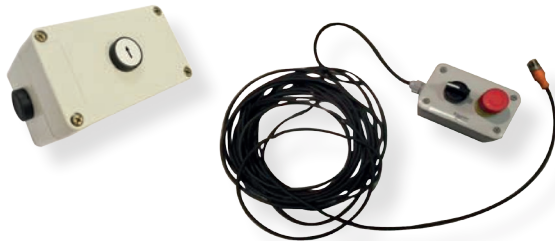
**Émetteur seul**  
Remote control only

119A35246



**Ensemble émetteur / récepteur**  
Remote control / receiver assembly

119A34048 + 119A34657



**Ensemble boîtier + télécommande**  
Wonder lead box + remote control assembly

071012007 / 071A26047



**Bouchon de coupleur 1" male / 1" femelle**  
QR coupling male 1" stopper / female 1" stopper

075001009



**Coupleur push-pull mâle 1"**  
QR coupling male 1"

075001008



**Coupleur push-pull femelle 1"**  
QR coupling female 1"

075A13183



**Coupleur push-pull femelle 3/4**  
QR coupling female 3/4

075A13182



**Coupleur push-pull mâle 3/4**  
QR coupling male 3/4

069A29118



**Coupleur push-pull anti-pollution femelle 1"**  
Antipollution QR coupling female 1"

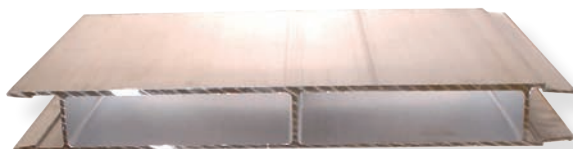
069A29119



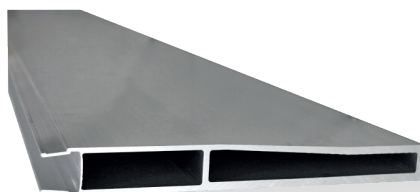
**Coupleur push-pull anti-pollution mâle 1"**  
Antipollution QR coupling male 1"

# Carrosserie FMA®

## Bodywork



- |           |  |
|-----------|--|
| 343A8292  | PROFIL PANNEAU ALU 2X2 LG.3000<br>Body panel L 3000 mm 2mm inside / 2mm outside          |
| 343A426   | PROFIL PANNEAU ALU 3X2 LG.3000<br>Body panel L 3000 mm 3mm inside / 2mm outside          |
| 343A26565 | PROFIL PANNEAU ALU 3X2 LG.2780<br>Body panel L 2780 mm 3mm inside / 2mm outside          |
| 343A431   | PROFIL PANNEAU ALU 3X2 LG.2442<br>Body panel L 2442 mm 3mm inside / 2mm outside          |
| 343A28082 | PROFIL PANNEAU ALU 3x2 LARG.168 LG.3300<br>Body panel L 3300 mm 3mm inside / 2mm outside |
| 343A5371  | PROFIL PANNEAU ALU 3X2 LG.3300<br>Body panel L 3300 mm 3mm inside / 2mm outside          |
| 343A28011 | PROFIL PANNEAU ALU 3X2 LG.2420<br>Body panel L 2420 mm 3mm inside / 2mm outside          |



- |              |  |
|--------------|--|
| 342F00360648 | PROFIL FIN DE PANNEAU ALU F00360648 LG.3639<br>Side panel end plank offset |
|--------------|--|

# Carrosserie FMA®

## Bodywork



N° de série



**Peigne racleur**  
Floor comb plate

341F00360643



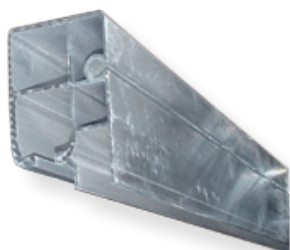
**Rive supérieure avec jonc 90 mm**  
Top rave with sheet rebate 90 mm

KOF00392010  
KOF71083910



**Rive de cadre acier**  
Steel top rave

341F00360530



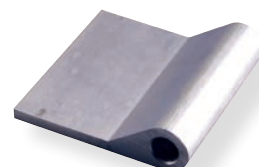
**Rive supérieure avec jonc**  
Top rave with sheet rebate

F00103690



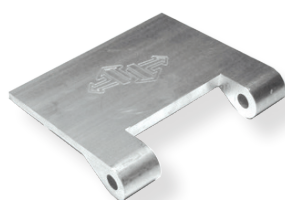
**Traverse supérieure arrière**  
Rear top cross membe

F00033809



**Chappe haute**  
Top hinge

F00033808 :112 mm (2003→)



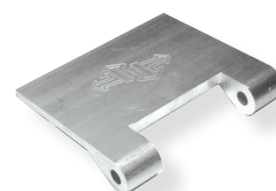
**Chappe de peinture alu**  
Door hinge-body

F00092210



**Support de verrou**  
Spring catch support

F00092220 :152 mm (→2002)



**Chappe de peinture alu**  
Door hinge-body

F00092230



**Penture alu**  
Door hinge-door

126A22673



**Vis inox pour penture**  
Stainless steel door hinge bolt

122A22674



**Écrou inox**  
Stainless steel locknut

# Carrosserie FMA®

## Bodywork

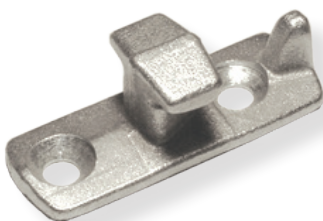


101A21499



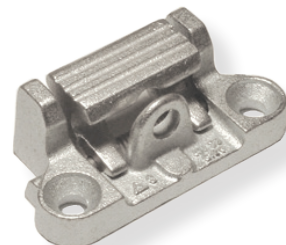
**Kit de fermeture**  
Door locking kit

101A23786



**Gâche de crémons**  
Door catch-body

101A22295



**Verrou de poignée**  
Spring catch-door

107A21500 (ø 18 mm) LG.3200  
107A25218 (ø 18 mm) LG.3500  
286A28132 (ø 28 mm) LG.3600



**Axe de crémons ø 18 mm / 28 mm**  
Door through rod ø 18 mm / 28 mm

F00094633



**Poignée de porte standard ø 18 mm**  
Reinforced door handle ø 18 mm

F00095033



**Poignée de porte renforcée ø 28 mm**  
Reinforced door handle ø 28 mm

F00094670



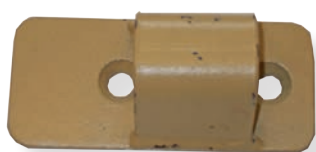
**Ensemble verrou gauche**  
Left catch door

F00094680



**Ensemble verrou droit**  
Right catch door

F00094681



**Gâche de crémons**  
Catch plate

101A3913



**Butée arrêt de porte**  
Rubber buffer

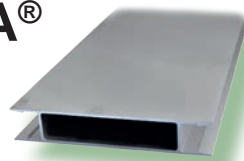
145A25335



**Joint de porte au mètre**  
Rear door seal per meter

# Carrosserie FMA®

Bodywork



101A27947



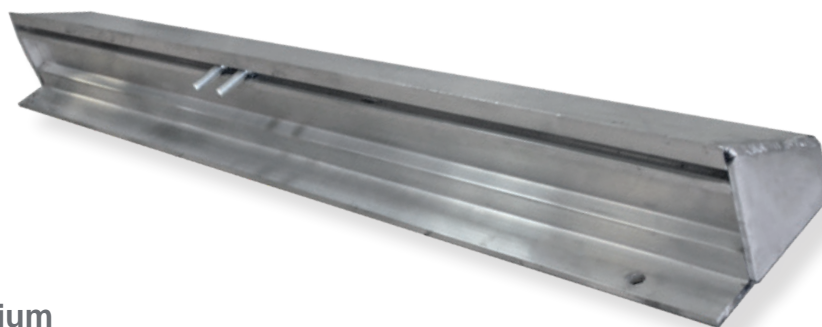
**Joint de charnière au mètre**  
Seal hinge per meter

KOF30803300



**Butoir acier sur panneau latéral (2 par semi-remorque)**  
Side panel steel buffer (2 per semitrailer)

FA00331500



**Butoir AR aluminium**  
Aluminium rear bumper

107A28580



**Butoir aluminium seul pour enrouleur de bâche (2 par semi-remorque)**  
Reel canvas aluminium buffer only (2 per semitrailer)

# Carrosserie FMA® portes automatiques

## Hydraulic back door bodywork



KOF00501100



**Boîtier seul ouverture porte**  
Box only

F17460374 : Ø 40 lg 150 mm

F28290372 : Ø 40 A60 lg 166 mm



**Axe d'articulation de porte Ø 40 lg 150 mm / A60 lg 166 mm**  
Door pivot pin Ø 40 lg 150 mm / A60 lg 166 mm

F17580970 : lg 175 mm

F17460375 : lg 126 mm



**Axe de Vérin de porte Ø 30 mm**  
Door pivot pin Ø 30 mm

063A15130



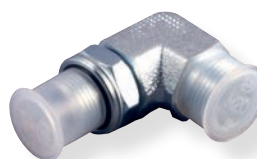
**Vérin de porte**  
Hydraulic door cylinder

067A6131



**Clapet parachute pour vérin 063A15130**  
063A15130 cylinder hose burst valve

071A23386



**Coude pour vérin 063A15130**  
Valve for ram 063A15130

068900972



**Valve d'équilibrage double**  
Dual counterbalance valve

066002000



**Limiteur de débit**  
Flow control valve

067A29007



**Clapet de sécurité**  
Security valve

# Carrosserie FMA® portes automatiques

Hydraulic back door bodywork



069A29324



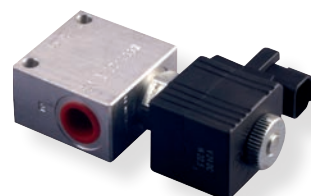
**Bobine pour clapet**  
Valve coil

064A29362



**Clapet de sécurité NF 24V**  
Security valve

064A210995



**Clapet de sécurité NC1/4 24V**  
Security valve

067A211064



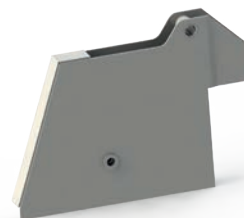
**Securité porte auto 1/4**  
Hydraulic back door security

N°de série



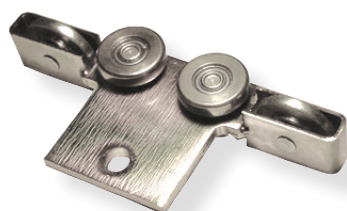
**Boîtier droit**  
Straight case

N°de série



**Boîtier gauche**  
Left case

F00079901



**Chariot renforcé pour paroi**  
Mobile wall roller skate

F00076700



**Chariot avec racleur**  
Roller skate + cleaner

092A27040



**Sangle élastique**  
Elastic strap

107A13744



**Butoirs caoutchouc**  
Rubber buffer



# Carrosserie FMA® Protections latérales

## Side protections bodywork



091A19697



**Bavette d'aile de roue**  
Mud flap

KOF74873070



**Ailes de roues articulées**  
Articulated wheel wings

343A28106



**Profil de protection latérale aluminium**  
Aluminium side under run bar

343A28107



**Profil de déflecteur**  
Vertical deflector

343A28108



**Embout haut gauche / bas droit**  
Upper left / lower right end cap

343A28120



**Embout bas gauche / haut droit**  
Upper right / lower left end cap

343A11996



**Embout arrière plastique**  
Rear end cap

107A28237



**Support de profil de protection**  
Under run bar support

124A23014



**Clips 10 x 60 mm**  
Pin 10 x 60 mm

091A28438



**Tube aile Domar**  
Mud wing stay

107A28709



**Kit support d'aile x 4 (pour 107A28692)**  
Plastic mud wing stay (for 107A28692)

109A28816



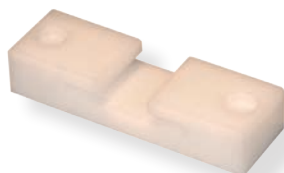
**Aile Domar**  
Mud wing

# Accessoires bâche de toit

## Parts for easy sheet



F00331101



**Anti-vibreur bas**  
Strap guide grooved

F00331102



**Anti-vibreur haut**  
Strap guide flat

F47030301



**Passe câble de filets**  
Nets cable profil

F00141506



**Sangle de côté 50 x 3400 mm**  
Strap 50 x 3400 mm

092A24545



**Cliquet de sangle 50 mm (modèle intermédiaire)**  
Strap ratchet 50 mm (middle)

F47681465



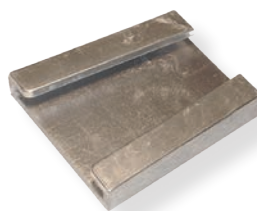
**Sangle + crochet**  
Strap with hook

FA00333500



**Support cliquet moulé**  
Strap ratchet support

F00333401



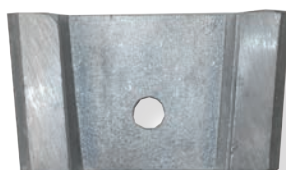
**Support arrêt de bâche**  
Sheet support anchor plate

FA00338015



**Support retenue de bâche**  
Sheet plate support

FA00334801



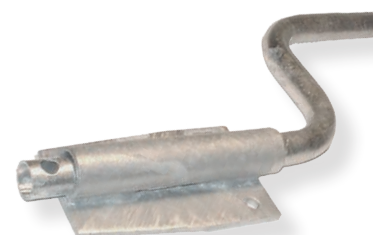
**Support arrêt de bâche percé**  
Sheet support anchor plate new model

FA00334601



**Plat de retenue**  
Stop plate

F25433330



**Arrêt de bâche déporté complet**  
Sheet support offset assembly

# Accessoires bâche de toit

## Parts for easy sheet



F00333420



**Arrêt de bâche pivotant**  
Sheet support straight

F21933320



**Arrêt de bâche pivotant (UK)**  
Sheet support straight (UK)

FA00336925



**Arrêt de bâche droit**  
Right sheet support straight

KOFA00332500



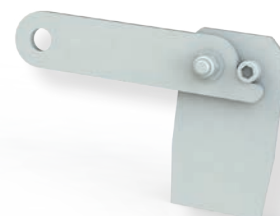
**Arrêt de bâche droit**  
Sheet support straight

FA00334810



**Arrêt de bâche déporté**  
Sheet support straight new model

KOFA00338010



**Arrêt de bâche droit**  
Right sheet support straight

FA00338510



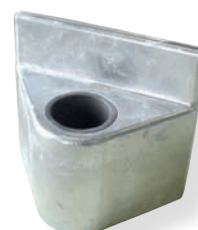
**Arrêt de bâche pivotant**  
Sheet support straight

341A8559 (Ø 30)  
341A26674 (Ø 50)



**Tubes de bâche**  
Canvas pole

F00083161



**Support d'arceau moulé**  
Sheet tie bar bracket

107001006



**Embout d'arceau**  
Tie bar end cap

F00085213



**Support arceau**  
Tie bar bracket

124A352



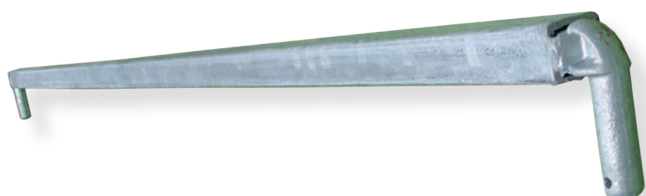
**Goupille**  
Pin

# Accessoires bâche de toit

## Parts for easy sheet



F00083110



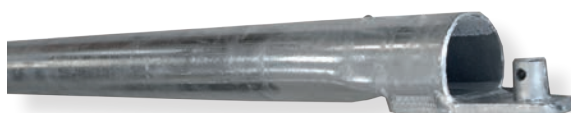
**Arceau standard ETX entraxe 2284 mm**  
Straight tie bar centre-to-centre 2284 mm

KOF32080810



**Arceau rond ø 76 mm, entraxe 2284 mm**  
Tie bar ø 76 mm, centre-to-centre 2284 mm

F58430830



**Arceau rond chapeautant ø 80 mm**  
Tie bar ø 80 mm

F00270601  
342A3910



**Règle de bâche L : 13600 mm**  
Roll over sheet profile flat L : 13600 mm

082003004



**Manille ø 10 mm**  
Quick link ø 10 mm

F47683340



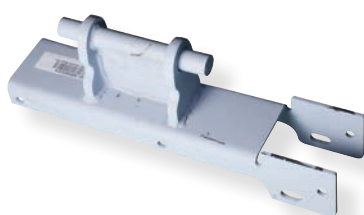
**Perche de bâche**  
Sheet / stap handle

F44913931



**Oreille nouveau modèle**  
Arm support

N° de chassis



**Support palier**  
Bearing support

F00391480



**Bras cadre acier**  
Net arm

KOF69641470



**Kit de tension de filet**  
Net tension kit

# Accessoires bâche de toit

## Parts for easy sheet



095001005



**Câble brut 5 mm (au mètre)**  
Net cable 5 mm (in meter)

095003000



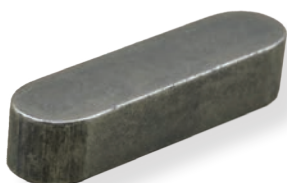
**Serre câble**  
Stop cable

095A28533



**Cable gaine PVC ø6**  
PVC Cable ø6

081A28379



**Clavette bout rond**  
Key

081A28326



**Réducteur avec moteur hydraulique gauche**  
Left gearbox with hydraulic engine

081A28251



**Réducteur avec moteur hydraulique droit**  
Right gearbox with hydraulic engine

081A28483



**Réducteur seul**  
Gearbox without motor

F00430870



**Bras de commande droit**  
Right operating arm

F00430880



**Bras de commande gauche**  
Left operating arm

082A28315



**Palier ø 30 mm**  
Bearing ø 30 mm

064A28845

ø 8 mm



**Kit support levier**  
Handle support assembly

064A28846

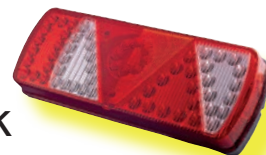
ø 8 mm



**Levier de distributeur hydraulique**  
Hydraulic spoolvalve handle

# Signalisation Aspock

## Lights and electricity Aspock



115A28607



**Feu rouge**  
Red light

115A33467



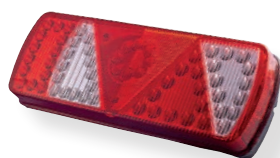
**Feu orange 1 led**  
Orange led light

115A33438



**Feu blanc 1 led**  
White led light

115A32649



**Feu à LED droit**  
Right LED light

115A32650



**Feu à LED gauche**  
Left LED light

115A33391



**Feu ECOPOINT 2 droit**  
Right ECOPOINT 2 light

115A33390



**Feu ECOPOINT 2 gauche**  
Left ECOPOINT 2 light

115A33159



**Éclaireur de plaque à leds**  
Number plate light

115A34566



**Feu à LED**  
LED light

115A34567



**Feu à LED de recul**  
Return LED light

115003007



**Triangle réfléchissant**  
Reflective triangle

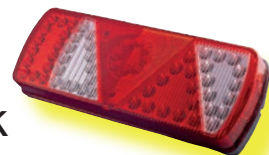
091A28399



**Barre lumière nue**  
Light bar

# Signalisation Aspock

## Lights and electricity Aspock

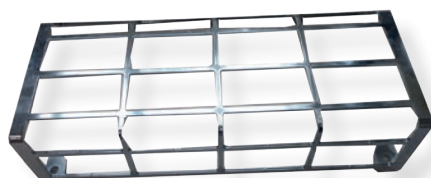


091A28401



**Kit 2 embouts BAE**  
Light bar end cap kit

F53261601



**Grille de feu droite / gauche**  
Right / left lens protector

FA00181351



**Barre lumière nue**  
Light bar

FA00181352



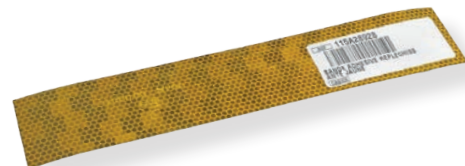
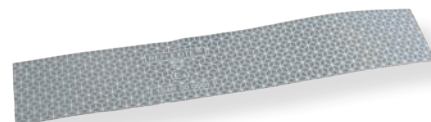
**Embout aluminium de barre lumière pour FA00181351**  
Light bar end cap for FA00181351

KOFA00334100



**Couvercle de barre lumière**  
Lights protecting board

115A23228 : Blanche  
115A28928 : Jaune  
115A32267 : Rouge



**Bandes réfléchissantes**  
Reflectives tapes

107A28262



**Bavette sur barre lumière droite ou gauche**  
Light bar mud flap right or left

107A28263

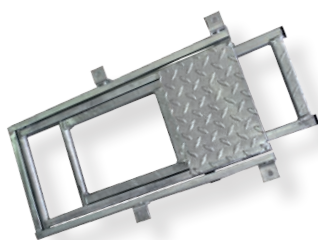


107A28761  
109A28314  
109A28440



**Coffre à outils plastique**  
Tool box

FA00335050



**Échelle escamotable**  
Rear step

101A28747



**Arrêt de porte**  
Door holder



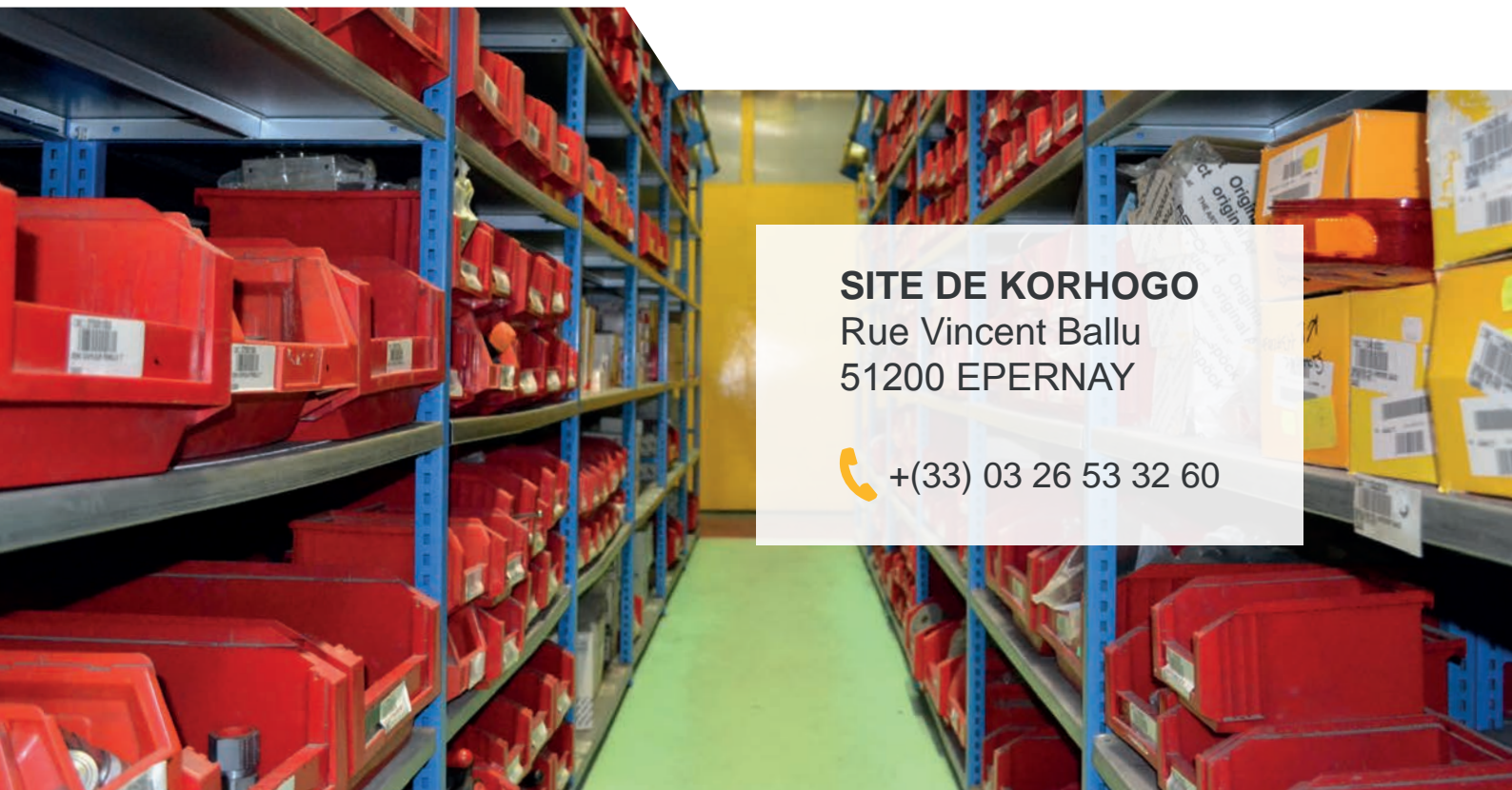
**PIÈCES DE RECHANGE /  
EXPORT SPARE PARTS SERVICE :**

Jean-Baptiste HAMEL

☎ + (33) 03 26 53 21 69    📠 + (33) 03 26 53 50 38

✉ hamel@legras.fr

www.legras-industries.com



**SITE DE KORHOGO**

Rue Vincent Ballu  
51200 EPERNAY

☎ + (33) 03 26 53 32 60